



2103mw9 Oak Tree lane, Selly Oak, Birmingham, B29 6HZ

£2,115 Per Calendar Month



2026/2027 Academic Year – High-Quality Student & Professional Home

Rent: £122 per person per week

Low deposit: £400 per person (based on a group of four)

Location: Approximately 15 minutes' walk to the University of Birmingham

Transport: Around 3 minutes to Selly Oak train station

Key features:

- Recently refurbished four-bedroom property
- Four fully furnished double bedrooms
- Two stylish, modern bathrooms
- Well-equipped fitted kitchen
- Comfortable shared living area
- Gas central heating with modern boiler
- Double-glazed windows and cavity wall insulation
- Spacious rear garden with patio area
- Ample parking available in a quiet cul-de-sac
- Security alarm system

Optional package:

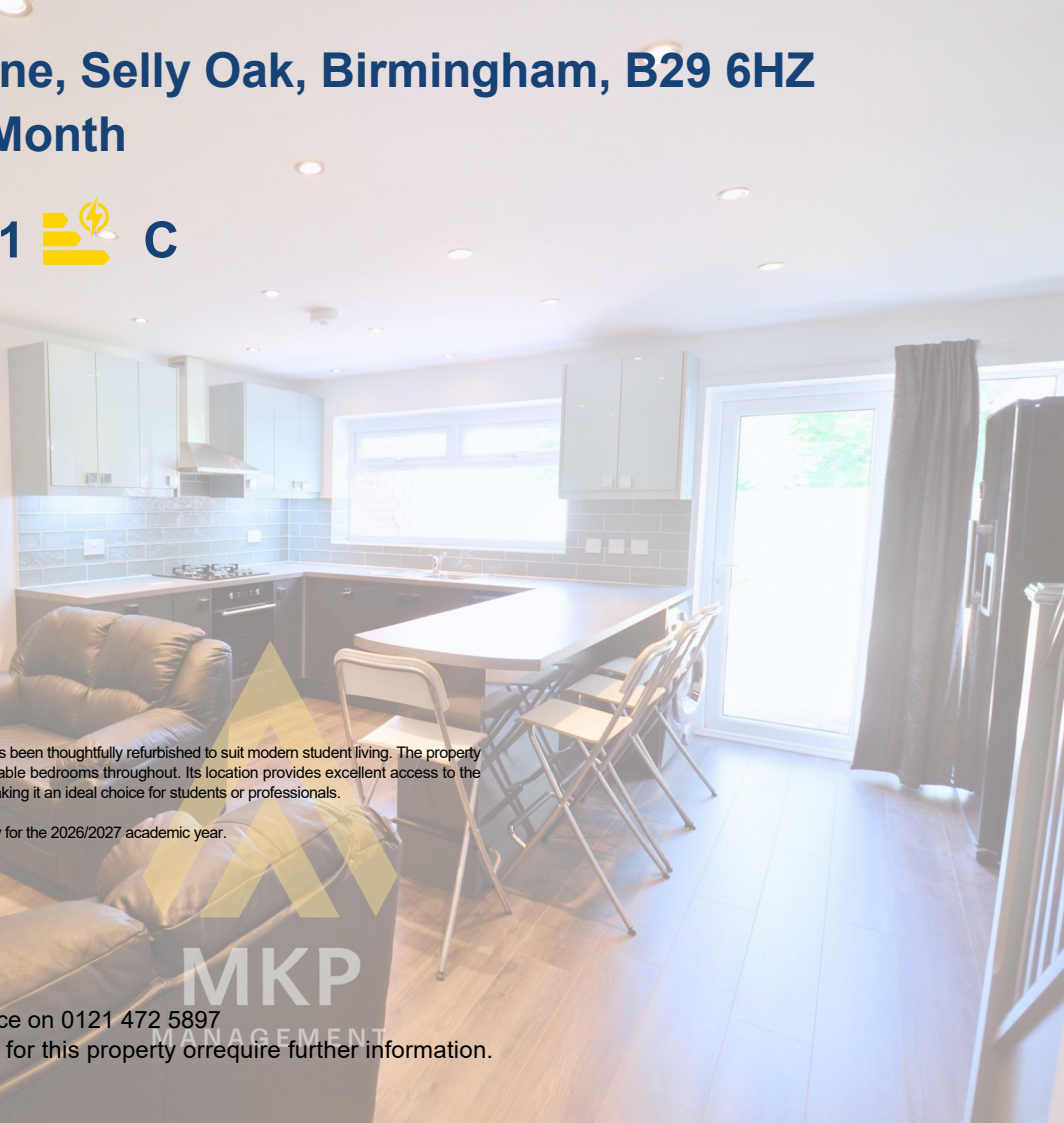
Rent including unlimited bills available at £151.90 per person per week

This newly updated four-bedroom house on Fairgreen Way, Selly Oak has been thoughtfully refurbished to suit modern student living. The property offers generous communal space, contemporary facilities, and comfortable bedrooms throughout. Its location provides excellent access to the University of Birmingham, local amenities, and nearby transport links, making it an ideal choice for students or professionals.

Enquire now to arrange a viewing and secure this well-presented property for the 2026/2027 academic year.

Viewing

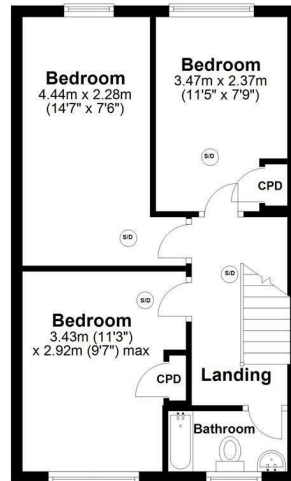
Please contact our MKP MANAGEMENT Office on 0121 472 5897 if you wish to arrange a viewing appointment for this property or require further information.



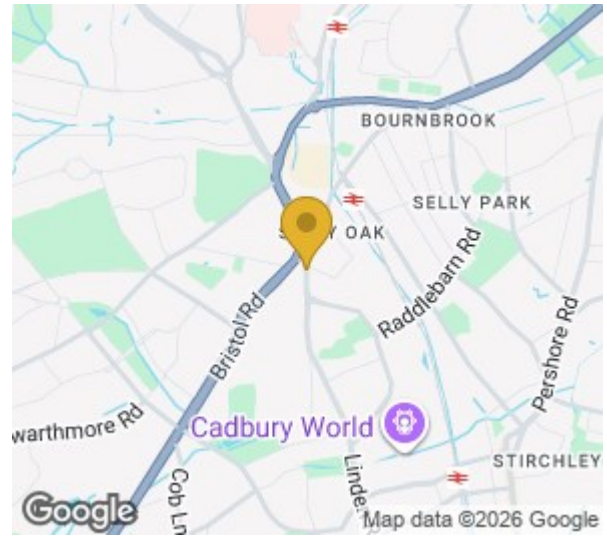
Ground Floor



First Floor

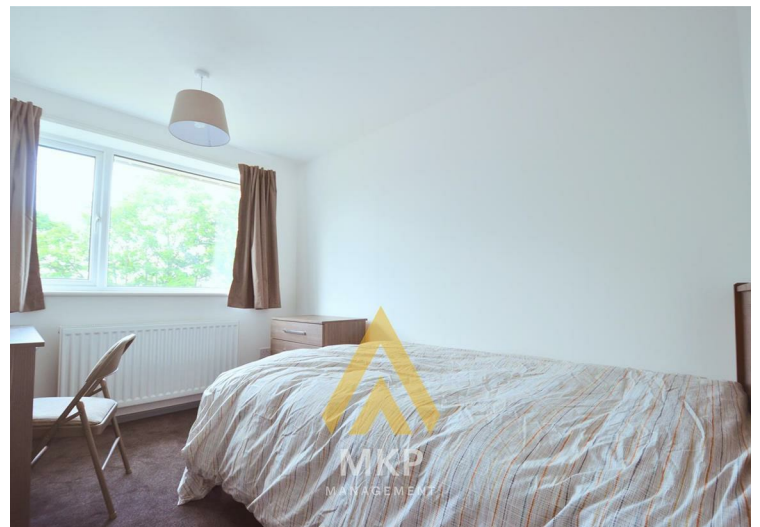
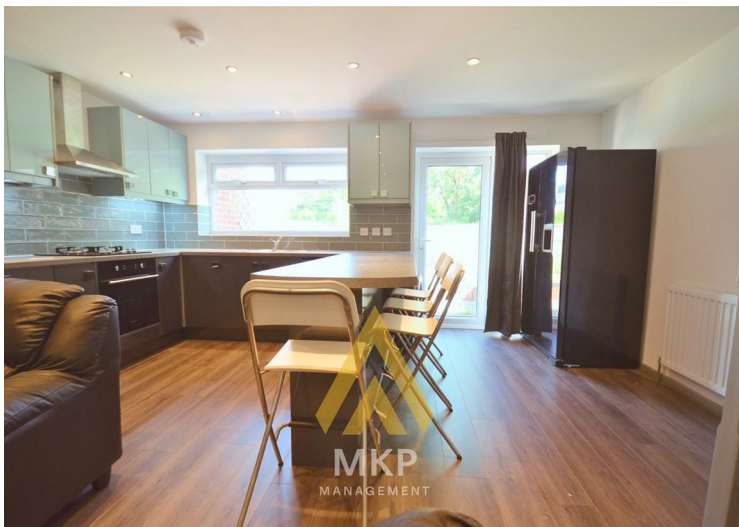


12 Fair Green Way, Selly Oak, Birmingham



Energy Efficiency Rating		
	Current	Potential
Very energy efficient - lower running costs		
(92 plus) A		87
(81-91) B		
(69-80) C	75	
(55-68) D		
(38-54) E		
(21-38) F		
(1-20) G		
Not energy efficient - higher running costs		
England & Wales	EU Directive 2002/91/EC	

Environmental Impact (CO ₂) Rating		
	Current	Potential
Very environmentally friendly - lower CO ₂ emissions		
(92 plus) A		89
(81-91) B		
(69-80) C	71	
(55-68) D		
(38-54) E		
(21-38) F		
(1-20) G		
Not environmentally friendly - higher CO ₂ emissions		
England & Wales	EU Directive 2002/91/EC	



These particulars, whilst believed to be accurate are set out as a general outline only for guidance and do not constitute any part of an offer or contract. Intending purchasers should not rely on them as statements of representation of fact, but must satisfy themselves by inspection or otherwise as to their accuracy. No person in this firm's employment has the authority to make or give any representation or warranty in respect of the property.